



mega 2 blok

SHAPE  
YOUR  
LIFE  
AND  
YOUR  
FUTURE





UNMISSABLE  
INVESTMENT OFFER  
IN CENTRAL ISTANBUL  
**FROM ONLY \$66.000**

CITIZENSHIP PACKAGE  
2X2 BEDROOM APARTMENTS

**FROM \$260.000**

TITLE DEED READY





# SHAPE YOUR LIFE AND YOUR FUTURE. CHOOSE YOUR IDEAL HOME.

SHAPE YOUR LIFE AND YOUR FUTURE.

WE HAVE 2 SUGGESTIONS THAT WILL CHANGE YOUR POINT OF VIEW FOR YOUR HOME, INVESTMENTS AND EVEN NATURE.

IN THE CENTER OF KAGITHANE, THE FLATS WILL CHANGE YOUR VIEW FOR YOUR LIFE IN THE PROJECT THAT HAS AN EXPERIENCE SIGNATURE AND HAS ADDED MUCH HAPPINESS TO ITS PAST PROJECTS.

THIS PROJECT OFFERS YOU UNIQUE AND PRIVILEGED LIVING SPACES FOR A HAPPY LIFE IN YOUR DREAM HOME WITH DIFFERENT FLOOR PLANS. STARTING FROM THE USEFUL. LARGE 1+1 FLATS, 2+1 AND 3+1 FLATS, EACH SQUARE METER OF WHICH IS PROCESSES INDIVIDUALLY WITH THE LEADING BRANDS OF MODERN ARCHITECTURE AND DECORATION, ARE WAITING FOR YOU TO CHOOSE THE ONE FOR YOU AND YOUR FAMILY.





KAĞITHANE METRO  
**5 MIN.**

YAVUZ SULTAN  
SELIM BRIDGE  
**15 MIN.**

BEŞİTAŞ  
**15 MIN.**

TEM HIGHWAY  
**2 MIN.**

LEVENT  
**5 MIN.**

MECİDİYEKÖY  
**10 MIN.**

FSM BRIDGE  
**5 MIN.**

JULY 15 MARTYRS  
BRIDGE  
**15 MIN.**

ISTANBUL AIRPORT  
**20 MIN.**

TAKSİM  
**10 MIN.**

MASLAK  
**5 MIN.**

AXIX MALL  
**2 MIN.**





## IT IS RIGHT TIME TO CHANGE YOUR PERSPECTIVE ON INVESTMENTS!

**YOUR PERSPECTIVE ON INVESTMENTS WILL CHANGE.**

**CONSISTING OF 28 AND 98 FLATS IN THE BLOCK AND IN TOTAL 132 FLATS, IS LOCATED IN KAĞITHANE THAT IS ONE OF THE MAJOR AND IMPORTANT DISTRICTS OF ISTANBUL. 2BLOK IS 3 MINUTES AWAY FROM THE E-5 AND TEM HIGHWAYS THAT ARE THE ROUTE OF THE BOSPHORUS BRIDGE'S CONNECTING EUROPE AND ASIAN SIDE. LOCATED IN THE CIRCLE OF CENTRAL BUSINESS AREAS, ALSO ATTRACT YOU WITH IT'S PROXIMITY TO DEVELOPED ALTERNATIVE ROADPROJECTS AND TUNNELS.**

**THIS PROJECT HAS ALL THE PRIVILEGES OF MODERN ARCHITECTURE OF THE CITY IN THE CENTER OF THE CITY OF KAĞITHANE, WILL BE YOUR RIGHT ADDRESS FOR INVESTING WITH IT'S PROXIMITY TO ELITE SCHOOLS, UNIVERSITIES, HOSPITALS AND SHOPPING CENTERS.**

**THIS AESTHETIC AND AMBITIOUS PROJECT WILL CHANGE YOUR INVESTMENT PERSPECTIVE SO FAR.**







## “HAPPY LIFE IN YOUR DREAM HOME”

PLAYGROUNDS COLORED WITH THE JOYFUL LAUGHTER OF THE CHILDREN AND IMPROVING THEIR GAME WORLDS.. FITNESS STUDIO AND OUTDOOR SWIMMING POOL THAT WILL ADD SPORTS AND HEALTH TO YOUR LIFE.. OPEN SPACES WITH THEIR UNIQUE LANDSCAPE DESIGN, IN WHICH YOU WILL ENJOY WITH GREEN AND CHAT WITH YOUR NEIGHBORS.. SECURITY SYSTEM WITH 7/24 CCTV THAT PROTECTS YOUR LOVED ONES.. PRIVATE INDOOR PARK LOT RESERVED FOR EACH FLAT.. SPECIAL ARCHITECTURALLY DESIGNED EXTERIOR WITH COMFORT AND DIFFERENCE TO THE PLACES.. A ROLLER SHUTTER SYSTEM THAT WILL CHANGE THE APPEARANCE OF THE EXTERIOR AND YOUR OUTLOOK..

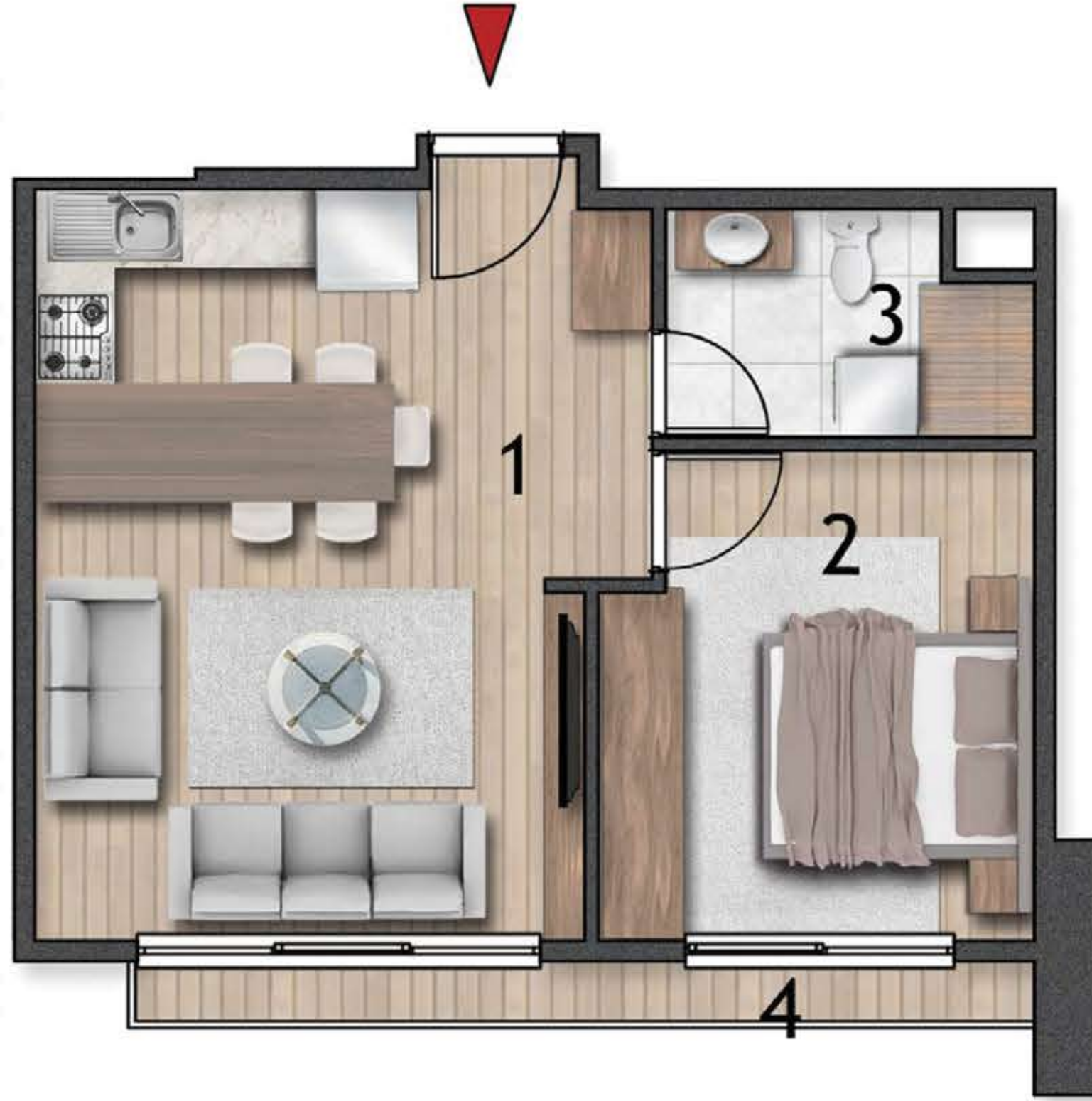








## 1+1 A4 APARTMENT



## 2BLOK/ 1+1 A4

1	LIVING ROOM + KITCHEN	: 24.60 M2
2	BEDROOM	: 11.34 M2
3	BATHROOM	: 4.29 M2
4	BALCONY	: 3.37 M2

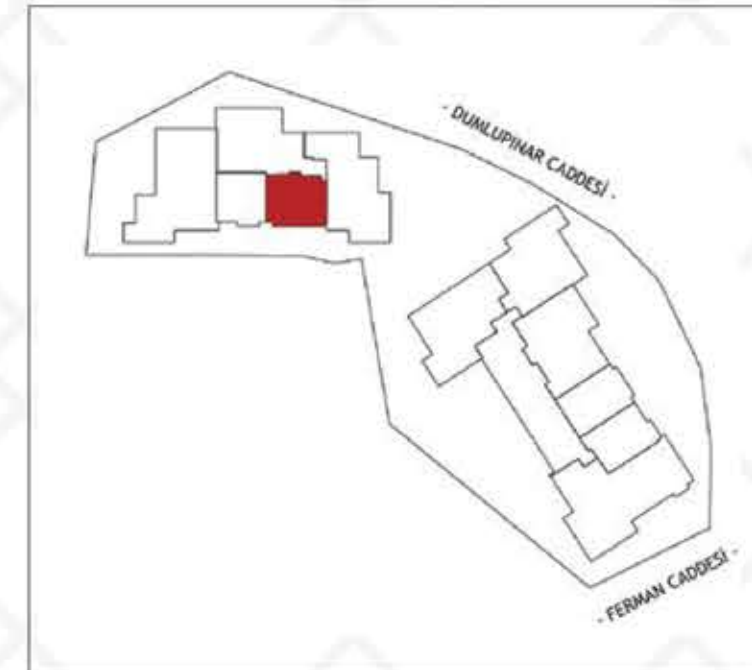
---

NET	: 43.60 M2
-----	------------

---

GROSS	: 64.28 M2
-------	------------

---









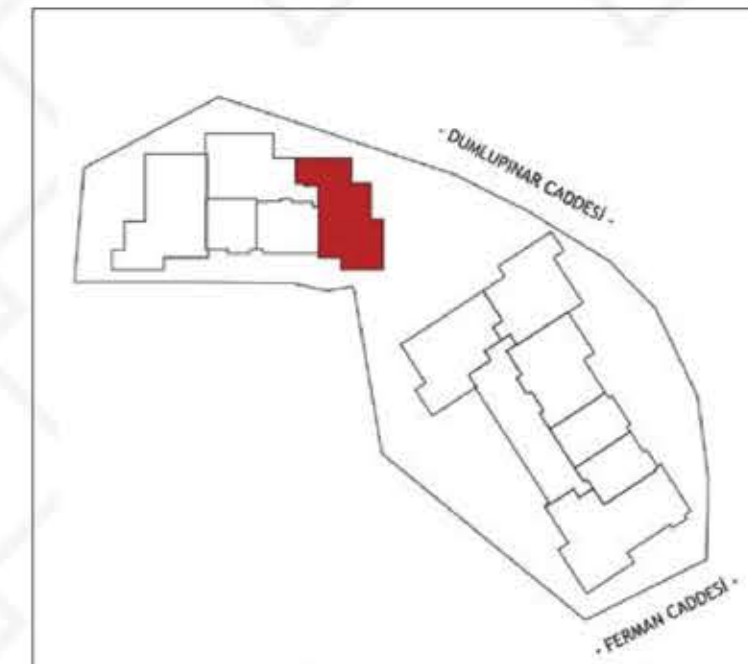
## // 2+1 A2 APARTMENT //



### 2BLOK/ 2+1 A2

1	LIVING ROOM	: 22.55 M2
2	KITCHEN	: 9.70 M2
3	BEDROOM	: 8.70 M2
4	BEDROOM	: 13.21 M2
5	ENTREE	: 2.97 M2
6	HALL	: 3.41 M2
7	BATHROOM	: 4.18 M2
8	BALCONY	: 14.70 M2

NET	: 79.47 M2
GROSS	: 117.47 M2

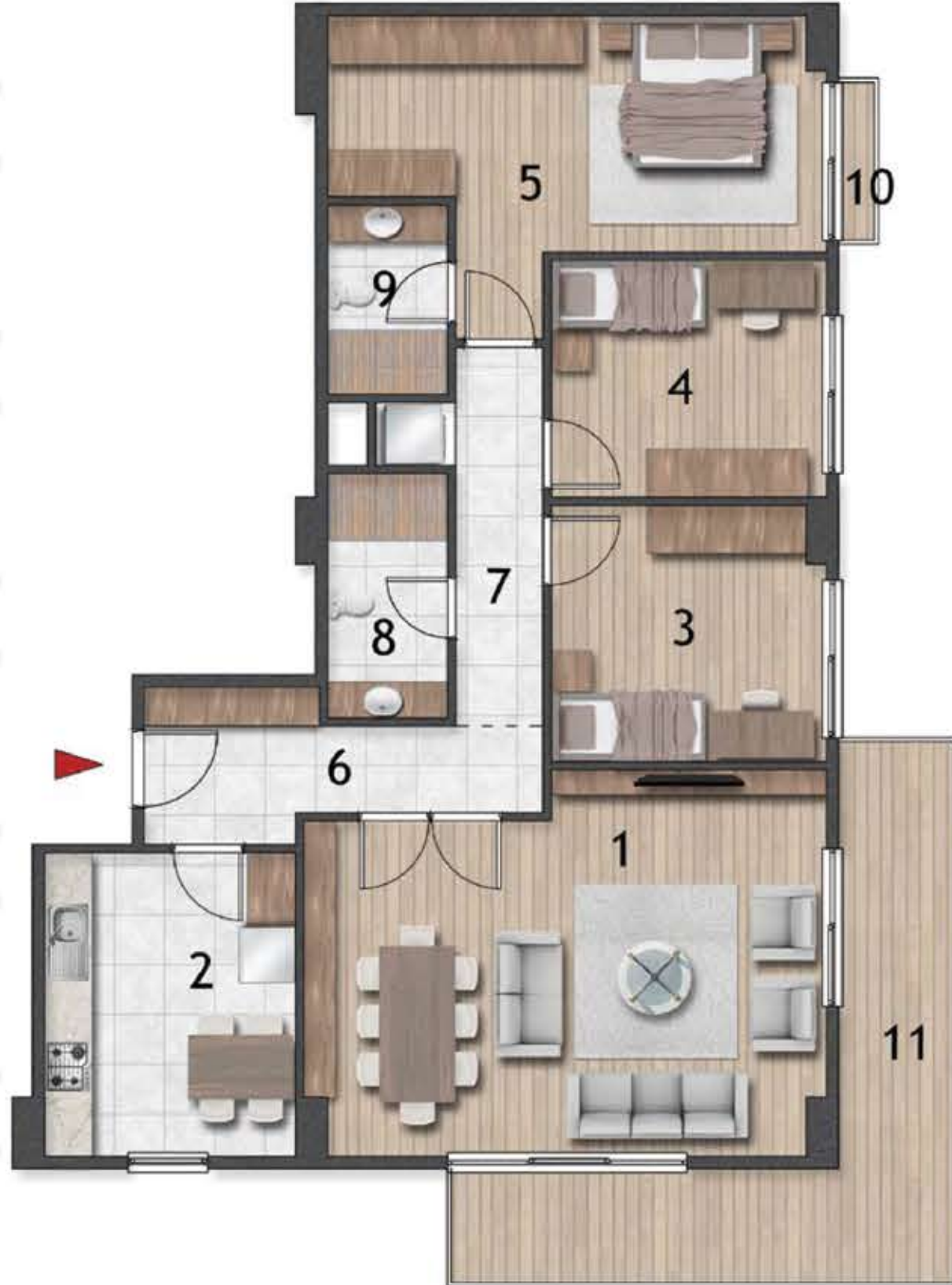








## 3+1 B2 APARTMENT



## 2BLOK/ 3+1 B2

1	LIVING ROOM	: 30.08 M2
2	KITCHEN	: 12.13 M2
3	BEDROOM	: 11.21 M2
4	BEDROOM	: 10.35 M2
5	BEDROOM	: 18.84 M2
6	ENTREE	: 7.36 M2
7	HALL	: 5.28 M2
8	BATHROOM	: 4.65 M2
9	BATHROOM	: 3.60 M2
10	BALCONY	: 1.05 M2
11	BALCONY	: 17.78 M2

NET : 122.33 M2

GROSS : 164.61 M2

